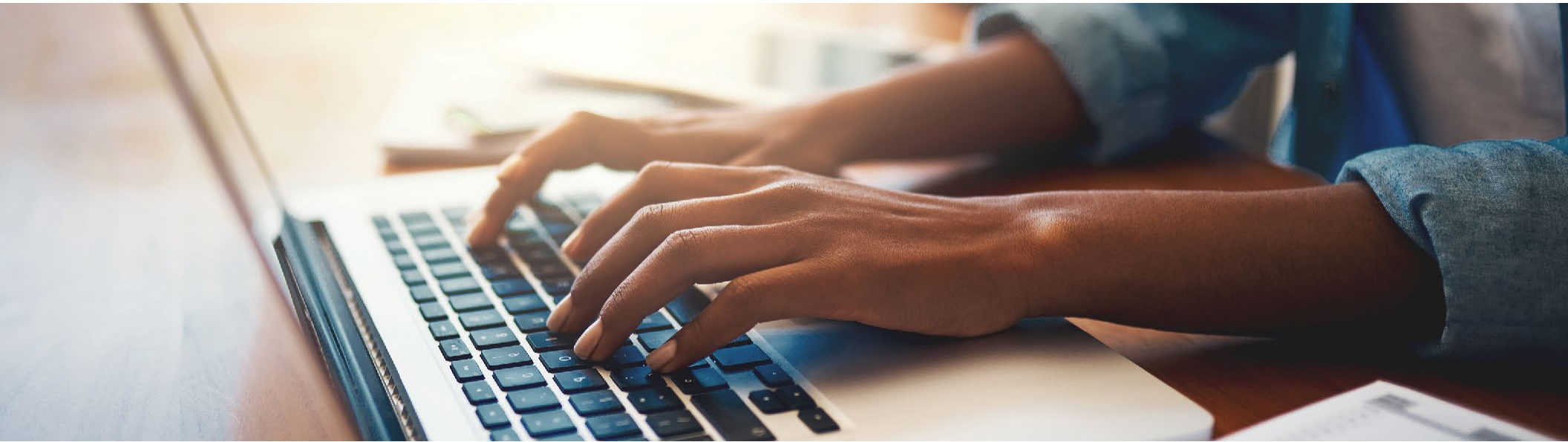




BlueCross BlueShield of Texas



April Trainings for Indices Reporting

Sign up for 2021 training to learn how our online data tool can help you and our members

What is Indices?

Indices is a Blue Cross and Blue Shield of Texas (BCBSTX) reporting platform. It offers 24/7 online access to a range of insights about the BCBSTX members you are treating, including quality and risk metrics. Its data is easy to navigate and can help you take action for members' care.

Who uses Indices?

Indices is for care coordinators, population health managers, clinical quality professionals, physician champions and others who focus on closing care gaps and improving quality.

What can Indices do?

The information in Indices can help:

- **Improve quality of care** for our members by identifying gaps in their care, as reflected in claims and other regularly updated data. This may include wellness exams, screenings or other preventive care.
- **Identify members' risks** for chronic conditions and the severity of any conditions

Closing gaps in members' care may help improve your overall quality performance and the Centers for Medicare & Medicaid Services (CMS) Star Ratings you may be assigned.



Register for Indices Training

Sign up for our online training. We will offer additional sessions, including in-person training, throughout the year.

Indices Overview Sessions			Indices Expert Sessions		
What you'll learn: Overview: Why use Indices and an overview of the functionality and data points in the Indices Quality Outcomes and Risk Adjustment Dashboards Length: 45 minutes			What you'll learn: Risk Adjustment: How to use the Indices Risk Adjustment dashboards and extract the member details report to view open HCCs Quality: How to use the Indices Quality Outcomes dashboards, and how to extract the member details report to identify open care gaps Q&A with the Experts: Tips and Tricks from our Experts with the opportunity to ask questions and get answers Length: 30 minutes		
April					
April 27, 11 a.m. CST	Register here	Overview	April 7, 1 p.m. CST April 14, 1 p.m. CST	Register here Register here	Risk Quality
May					
May 25, 11 a.m. CST	Register here	Overview	May 5, 1 p.m. CST May 19, 1 p.m. CST	Register here Register here	Risk Quality
June					
June 22, 11 a.m. CST	Register here	Overview	June 2, 1 p.m. CST June 8, 11 a.m. CST June 30, 1 p.m. CST	Register here Register here Register here	Risk Q&A Quality

Questions?

Contact your Provider Network Consultant or Clinical Practice Consultant.